

SD-WAN

USE CASE



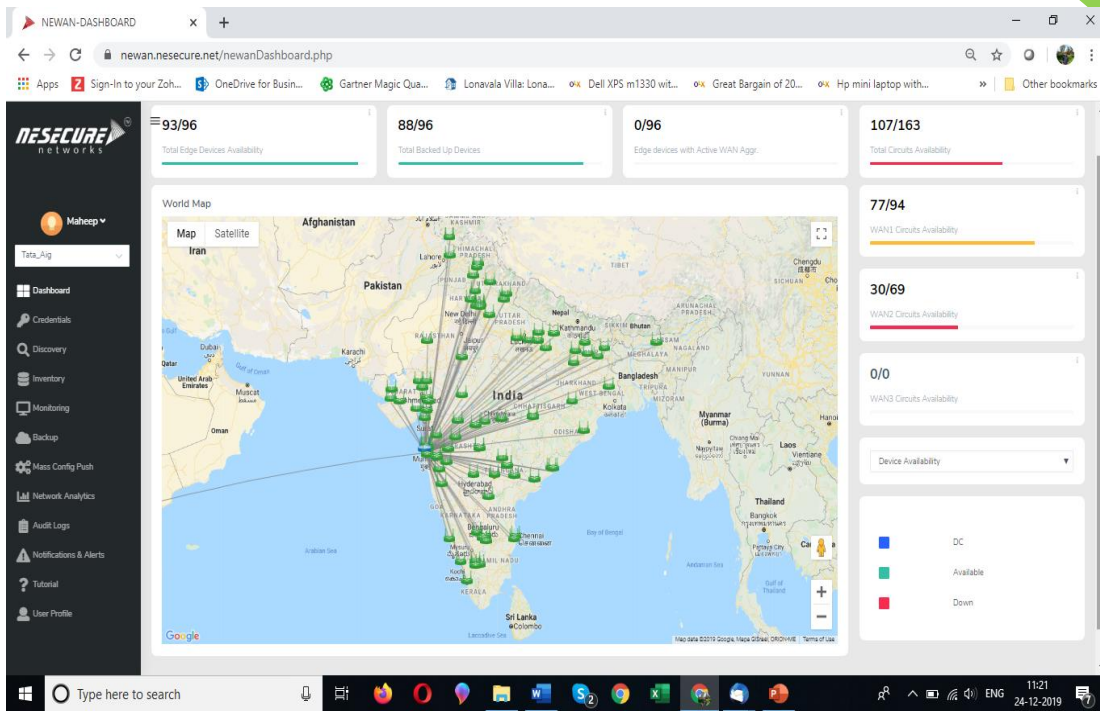
# SD-WAN USE CASE

Software-Defined Wide Area Network or SD-WAN is a next-gen network transformation solution for your business. It replaces the complex and costly hardware of lease lines and dependence on multiple ISPs with a single software solution which is NE-WAN managed SD-WAN.

Managed SD-WAN helps you grow your business quickly by helping you set up a new site in just 48-72 hr. Ne-WAN dashboard helps you monitor multiple sites from one location, track internet usage and increase productivity all of which will help you save costs.

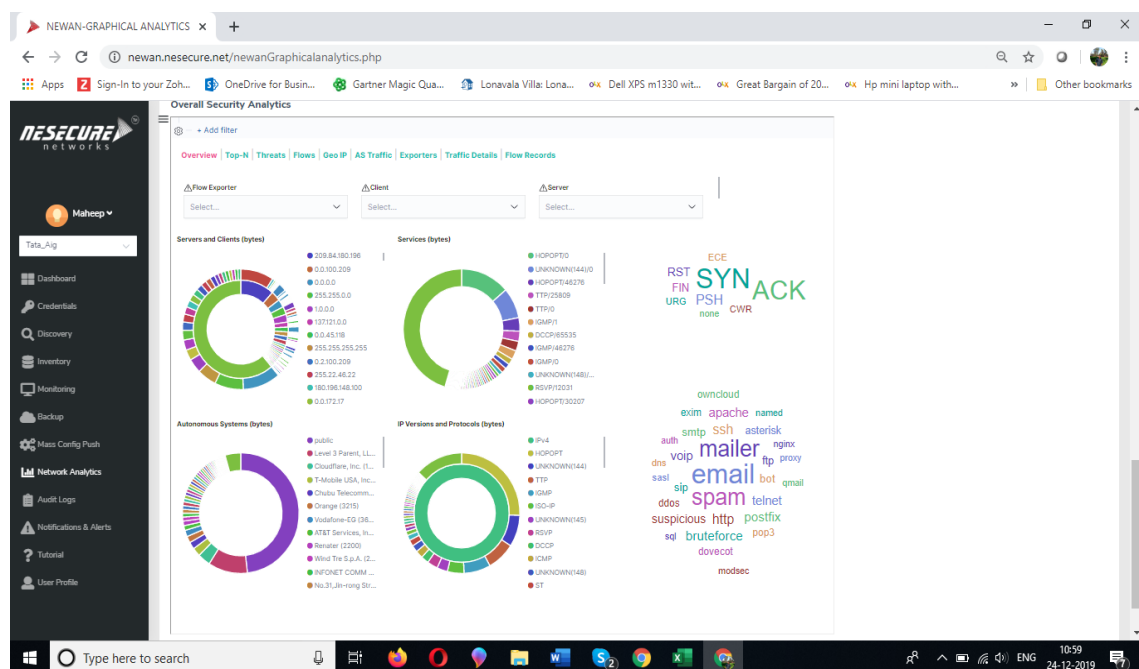
**Challenges :-** Ever expanding Logistics firm with 2900 warehouse were facing huge challenges in aligning IT strategy with growing business need , as new branches were being launched every 15th day in tier 2/3 cities. MPLS were not feasible in most of the tier 3 cities and 70% infrastructure on cloud poised a great challenge on optimisation the SaaS /cloud traffic.

**Solution :** - We not only solved the last miles issue using our home grown SD WAN platform. Soft appliance was deployed in cloud and edge SD WAN CPE at all the branches which seamlessly integrated 4G LTE and Broadband to accelerate cloud as well as sap traffic hosted in DC, in Mumbai .



## Business benefits derived from Ne-WAN :-

33% reduction in Capex and operational cost. Team became more productivity by 24% as their downtime reduced significantly by just 11hrs in a month compared to 69 hrs in a month. Visibility improved significantly for Network admin which enabled faster rollout of new application and enhanced digital transformation of the branch.





# *NESECURE*

Email Us : [info@necure.net](mailto:info@necure.net)

**Nesecure Networks Private Limited**

001, P3 – Pentagon Tower, Magarpatta City,  
Hadapsar, Pune, Maharashtra 411028

[www.necure.net](http://www.necure.net)

**DISCLAIMER :**

Nesecure Networks Private Limited 2020. This document is issued by Nesecure in confidence and is not to be reproduced in whole or in part without the express, prior written permission of Nesecure. Nesecure and the Nesecure Product logos are trademarks of the Nesecure Networks Private Limited.

Other product and company names mentioned herein may be the trademark of their respective owners. The information contained in this publication is correct at the time of going to publishing or print. Any reliance on the information shall be at the recipient's risk. No member of Nesecure shall have any liability in respect of the use made of the information.

The information may be subject to change. Services may be modified, supplemented or withdrawn by Nesecure without any prior notice. All services are subject to terms and conditions, copies of which may be provided on request.